



LEFT: A soft Zen elegance defines the theme in the stunning dining room. The custom sofa is by Burton James with custom fabric by Jim Thompson. The couple found the framed antique silk kimono stencil at Richard Cunningham's gallery in Hilo. Guests enjoy relaxing on Ficks Reed barstools.

ABOVE: Shawn Boudreau created custom cabinetry throughout the home, including the kitchen. "Barbara did not want 'shiny' anywhere," designer Shirley Wagner remembers. So they strove for a soft look, using Limea Verde panels in "Celery" from 3Form Resin to suggest a shoji screen.

Jewel Box of Kapa'au

MODESTLY BUILT NORTH KOHALA HOME A SHOWCASE FOR STUNNING "ISLAND/ASIAN FUSION" INTERIOR

Interior Design by/ Shirley Wagner, ASID, Fine Design Interiors, Inc.

Text by/ Kristina Anderson

Photography by/ Pablo McLoud

HIDDEN AWAY FROM ALMOST THE ENTIRE WORLD, AND RESTING atop a grassy hill ringed with 150-foot ironwood trees, stands a remarkable house. Built in a style that recalls Craftsman sensibilities, the home's unassuming exterior belies a captivating interior that at once astounds and soothes.

Dennis and Barbara Boyd's design for their home incorporates the couple's love of art and tribal artifacts. It also seamlessly blends indoors and outdoors. But from the outset, the couple wanted simple elegance to rule the day.

"This started out as a basic house that wouldn't cost a lot," recalls Dennis Boyd with a laugh. "So we didn't even use an architect; we had it drawn up by a draftsman. We had looked at lots of locations, and when we found this one, we decided that we didn't want to see 'fancy' up here. We believe that the home

needs to fit with the land, so we downplayed the architecture."

It turns out that the modest building plans were the perfect way to frame a finely honed, multi-layered and detailed interior, supervised by principal designer and project manager Shirley Wagner, ASID, owner of Waimea-based Fine Design Interiors, Inc. "We stuck with the original footprint of the house and focused on our goal of having a simple house with elegant finishes," Wagner says.

Originally hired to specify finishes, Wagner found that her role later expanded to assist the Boyds with furniture and accessories and planning the layouts of interior spaces. She also recommended upgrades including clear cedar, tongue-and-groove ceilings, a coffered ceiling for the master bedroom and a stucco exterior. But Wagner says she was probably happiest when they

BELOW: The dining table and chairs from McGuire Furniture feature two different custom fabrics from Brentano & Donghia. Lights from Hubbardton Forge and fans from Modern Fan add contemporary notes to the Eastern flavors.



agreed to go with pocket doors instead of the decidedly un-elegant glass sliders.

"The pocket doors really helped them achieve their vision of merging outdoors with indoors," Wagner says. She points out how the vast, ocean-view panorama becomes an open vista when the pocket door disappears into its track.

Another goal was to give the couple a main living area with two separate offices on opposite sides of the home. Although entirely connected, the home conveys the feeling of separate living spaces. Wagner says contractor Pat Hoy almost single-handedly put this 2,900-square foot house together.

The Boyds are avid collectors of antique oriental carpets; and Dennis Boyd, who holds undergraduate and graduate degrees in anthropology, has also collected unique cultural pieces from around the world, including Africa, Asia and the South Pacific.

Dubbed "Island/Asian Fusion," by Diane Bobek, design consultant to Wagner, the home features decorating schemes that combine contemporary Asian-influenced furnishings and décor together with lively geometric and modern touches, perfectly accenting the Boyd's tribal collections.

"The Eastern/Zen aesthetic was a complete departure for us," says Dennis Boyd, who adds that in their very formal, traditional-style Colorado home, some of his African pieces tended to get lost in all the space. So as they downsized, they brought as much as they could on each flight. "We felt like sherpas, trekking across the Pacific Ocean with our extra rugs and artifacts."

Adds Barbara Boyd, Dennis's wife of 33 years, "We had lots of favorite pieces we wanted to incorporate with the refined sense of color and style we had in mind. One of our goals was to have our eye instantly soothed when we walked in the door."

To achieve that end, Barbara Boyd worked in close collabo-



"We wanted to take every advantage of designing for a small space. The house has so many layers to it. That gives it the feeling of a much larger house," says Wagner, ASID.

ABOVE: Winner of the 2007 ASID Hawaii Award of Honor (1st Place), the Boyd's home is a study in attention to detail. "We downplayed the architecture to concentrate on the interior," Dennis Boyd says. All cabinetry by Shawn Boudreau of Mauna Kea Kitchen & Bath Co. The antique screen and kimono block are from Richard Cunningham, Hilo. Assorted primitive art is the client's personal collection. Chair by Holly Hunt with fabric by Robert Allen. A natural touch, the floor covering is a chenille and woven ratan from Fiberworks.

ration with Wagner's team, especially Bobek, on fabric selection. "We literally spent three to four months looking at fabrics alone," she says. "We probably spent more time doing that because we simply enjoyed it so much. I also think it was part of the charm of the process to go on the hunt locally for unusual art and accessories to fill in the spaces."

Linda Wolfsburg, a favorite local artist who later became a friend, not only provided commissioned art pieces, but sold much of her personal collection to the couple when she moved to Mexico. Barbara Boyd says one of her most treasured objects from Wolfsburg is a raku bowl filled with black sand from the now lava-inundated East Hawai'i beach town of Kalapana. The bowl was made by a Volcano Gallery artist who's now retired from potting. "It's as though the bowl with its black sand has saved all the spirits too," muses Barbara Boyd.

Other special touches throughout the home include cus-

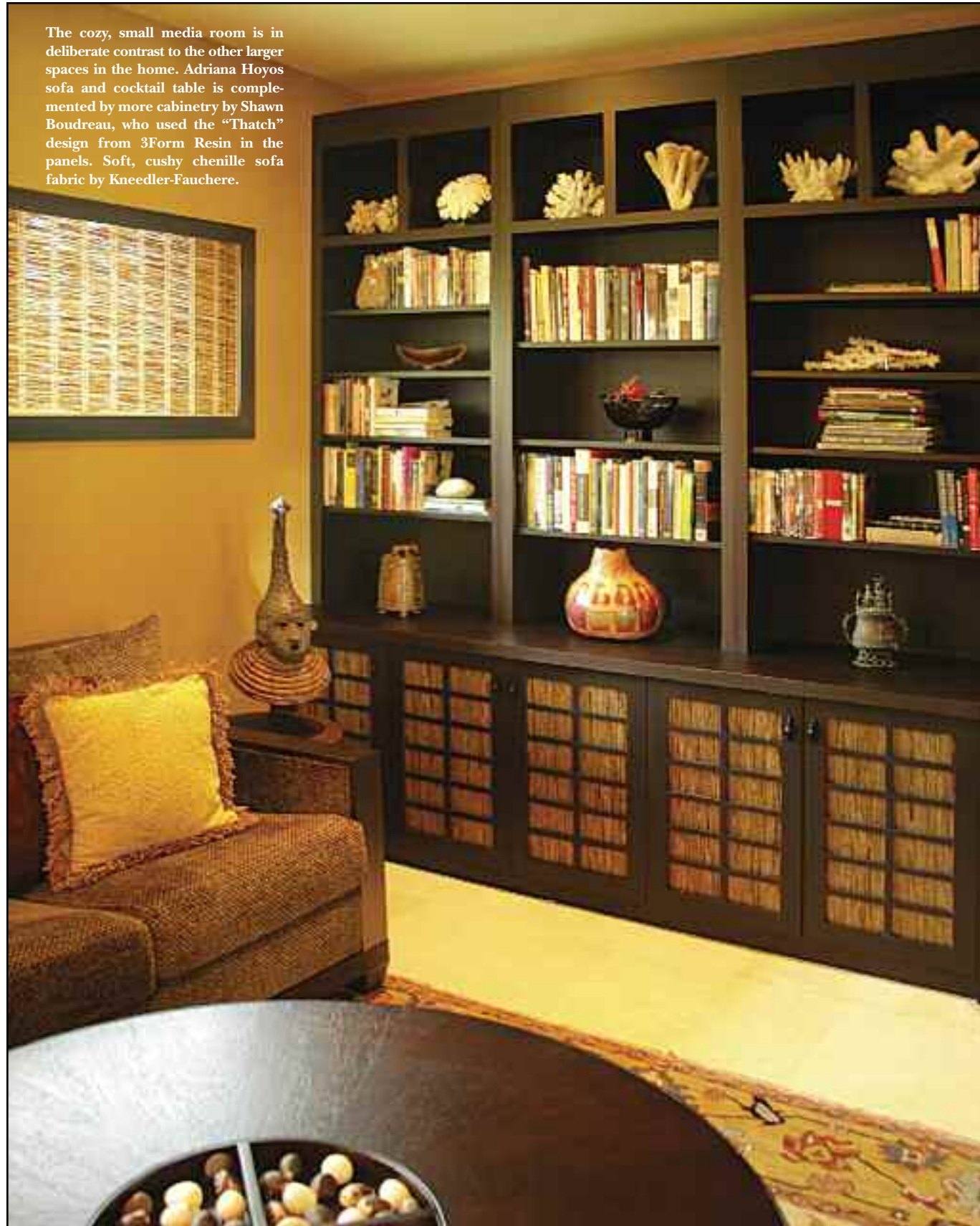
tom glass doors faux-painted to suggest shoji screens, and 3-Form resin panels installed in the tansu kitchen cabinetry, as well as in the ultra-cozy, super-compact media room.

The efforts of the design team were rewarded with a 2007 ASID Hawai'i Award of Honor (1st Place) for Mid-Size Residence.

Wagner admits to feeling fortunate that at the time there was still so much locally available furniture sources to choose from, giving clients a chance to try them out in person at showrooms or other locations. For example, the Boyds were able to check out upholstered pieces they were thinking of purchasing by visiting Café Pesto, which used the same chairs in its restaurant.

"A project really works when you have clients with a good feeling for what they want," says Wagner. "And it also helps when they have good taste!" In mutual admiration, the Boyds say that working with Wagner helped them achieve a comforting mix of

The cozy, small media room is in deliberate contrast to the other larger spaces in the home. Adriana Hoyos sofa and cocktail table is complemented by more cabinetry by Shawn Boudreau, who used the “Thatch” design from 3Form Resin in the panels. Soft, cushy chenille sofa fabric by Kneedler-Fauchere.



ABOVE: McGuire bed with Donghia custom fabric. The antique rocking chairs from Baik Design have Beacon Hill mohair cushions. The Boyd's antique Persian carpet made three total trans-Pacific trips with the Boyds: One to ship it over, another to ship it back to Denver to be sized and yet another to bring it back to its final resting place in Hawai'i. All doors in the home were custom built by J. Nathan Jones at JD International. The glass panels were faux painted to resemble shoji screens.

RIGHT: The soothing Zen indoor/outdoor shower in the master bathroom features relief tile from Bella Pietra's Bali Collection.



large spaces contrasted with small. Says Barbara Boyd: “Shirley’s crowning achievement is her expert sense of proportion and scale. She was right about everything she recommended.”

All who worked on the home revel in the end result, but they also admit that it was a huge challenge to complete the job on time and under budget. The residence was designed and built during one of West Hawai'i’s most intensive and stressful building booms, so labor and craft experts were in short supply, especially in isolated Hawi.

“Finishing this house was a process that took a mind-boggling amount of time to complete,” says Dennis Boyd. “We learned a lot about ourselves—that we had more patience than we thought and could remain focused on a singular goal. But now that it’s done, we are absolutely thrilled.”